

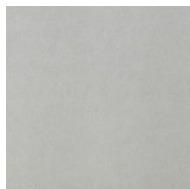


KP 906 E

TECHNICAL DATA SHEET

Introduction

- Excellent sanding by the precisely coated aluminum oxide grit.
- Sanding options by sanding machine.
- High finishing level for perfect smooth surface.



Backing Material	Antistatic "E" weight paper
Bonding	Double resin
Mineral Type	Aluminum Oxide with anti clogging top coat
Coating State	Closed coat
Manufacturing Width	1400mm

Available Grits

24	36	40	50	60	80	100	120	150	180	220	240
		●	△	△	△	△	△	△	△	●	●
280	320	360	400	500	600	800	1000	1200	1500	2000	2500
●	●	●	●	●	●	●	●				

◀ Rough (Grinding)

Finishing (Polishing) ▶

- Introductory Remarks ● : Standard Grit △ : Non Standard Grit (Available under request with a MOQ)

Application

- > Dry use
- > Fine sanding and finishing of wood, paints, fillers

Field

- > Wood

Form

- > Rolls
- > Belts

Usage



Head Office:

Via Delle Groane, 27/E 20024 Garbagnate M. -Mi- Italy

E-mail: itas.it@itasabrasivi.com

Website: www.itasabrasivi.com

I.T.A.S. ABRASIVES CO., LTD.

Yunxin Avenue, Yungang Road,

414009, Yueyang City, Hunan, China

Tel. +86 0730 3072778 / +86 0730 3072998

E-mail: itas.cn@itasabrasivi.com